

 Prevent event

SAFER

Sub-Saharan Africa Field Epidemiology Research

Dr Steve Wilson, *GALVmed*



General description

- **7 countries** with **local public partners** involved
- **Respiratory syndromic disease** – Criterized clinical cases
- **Network** of trained field technicians from **PREVENT** hatcheries
- **Virology analyses** performed by L'Ecole Nationale Veterinaire de Toulouse (**ENVt**)
- Bacteriology analyses conducted by **local partners**



Samples collection

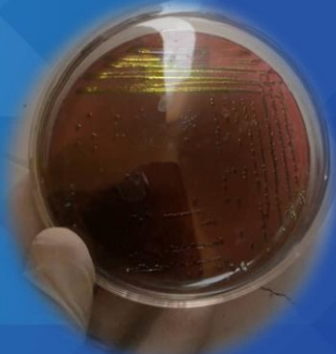
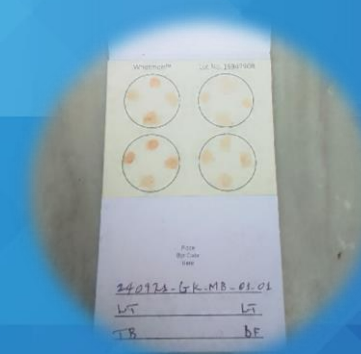
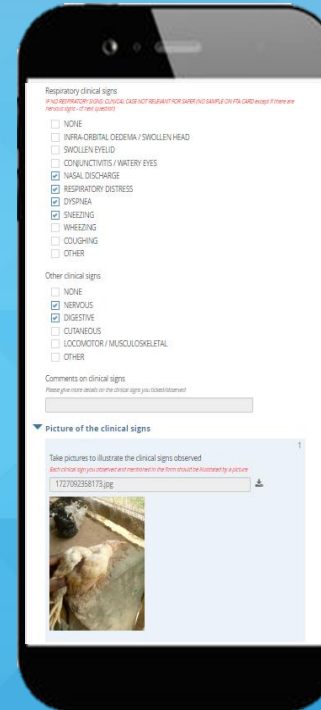
• Virology:

- Sampling on **FTA cards**
- Molecular analyses: **ND, IBV, IBDV, AIV**
- 317 samples collected/191 screened

• Bacteriology

- Sampling with swabs
- Bacteria identification/**AMR** profiling
- 257 samples tested
- FTs trained on sampling technics
- Farm visit reports sent by mobile app

	Samples collected (Virology)	Samples screened ENVT (Virology)	Samples screened locally (Bacteriology)
No. samples	317	191	257

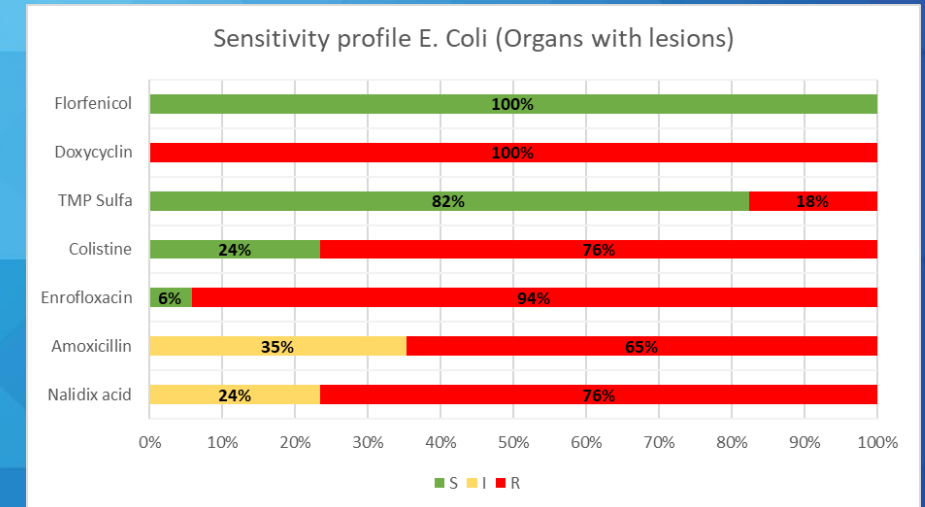


Current main outputs

- NDV – Mostly vaccines strains detected so far
 - Maintain good vaccination practices
- IBDV – High circulation (2 distinct strains)
 - Continue to monitor (especially reassortants)
 - Improve disinfection process / vaccination programs (vDoC)
- IBV – High challenge in some countries
 - Continue to monitor (especially variants)
 - Improve vaccination programs (vDoC)
- AIV – High challenge in some countries
 - Continue to monitor (especially co-infection)
 - Reinforce / Introduce vaccination

- **High level of AMR**

- Mostly E. Coli detected (+ Salmonella in some countries)
- High resistance of bacteria to the main anti-infective molecules
- Critical to continue monitoring AMR



Importance of SAFER outputs

- **Partnership:** local/international, all stakeholders have added value
- **Knowledge:** understand the main challenges affecting farmers (and/or human health)
- **Data collection:** critical to monitor & make decisions at higher level (digitalization is an asset)
- **Solutions:** prophylaxis/rational use anti-infectives
- **Training:** associated with recurrent feedback is necessary to get interpretable results
- **Technics:** necessary to identify pros & cons of some technics to improve them in the future



THANK YOU MERCI